



Understanding Work Health & Safety

ISO 45001:2018 Principles



Introduction: Creating a Safe Workplace Together

Work Health and Safety (WHS) is essential for protecting everyone in the workplace. It is not only a **legal requirement** but also a **moral obligation**. Together, we can create a safe environment by understanding our roles and responsibilities in workplace safety.



Understanding Work Health and Safety (WHS)



Definition and Importance of WHS

WHS focuses on safeguarding the health and safety of all workers. It ensures that everyone is protected from workplace hazards and promotes a culture of safety.

SAFETY AT THE WORKPLACE



Understanding Work Health and Safety (WHS)

Legal Requirements and Moral Obligation

Compliance with WHS regulations is mandatory for all organizations. Beyond legalities, there is a strong moral obligation to prioritise worker safety.



Understanding Work Health and Safety (WHS)



Everyone's Role in Workplace Safety

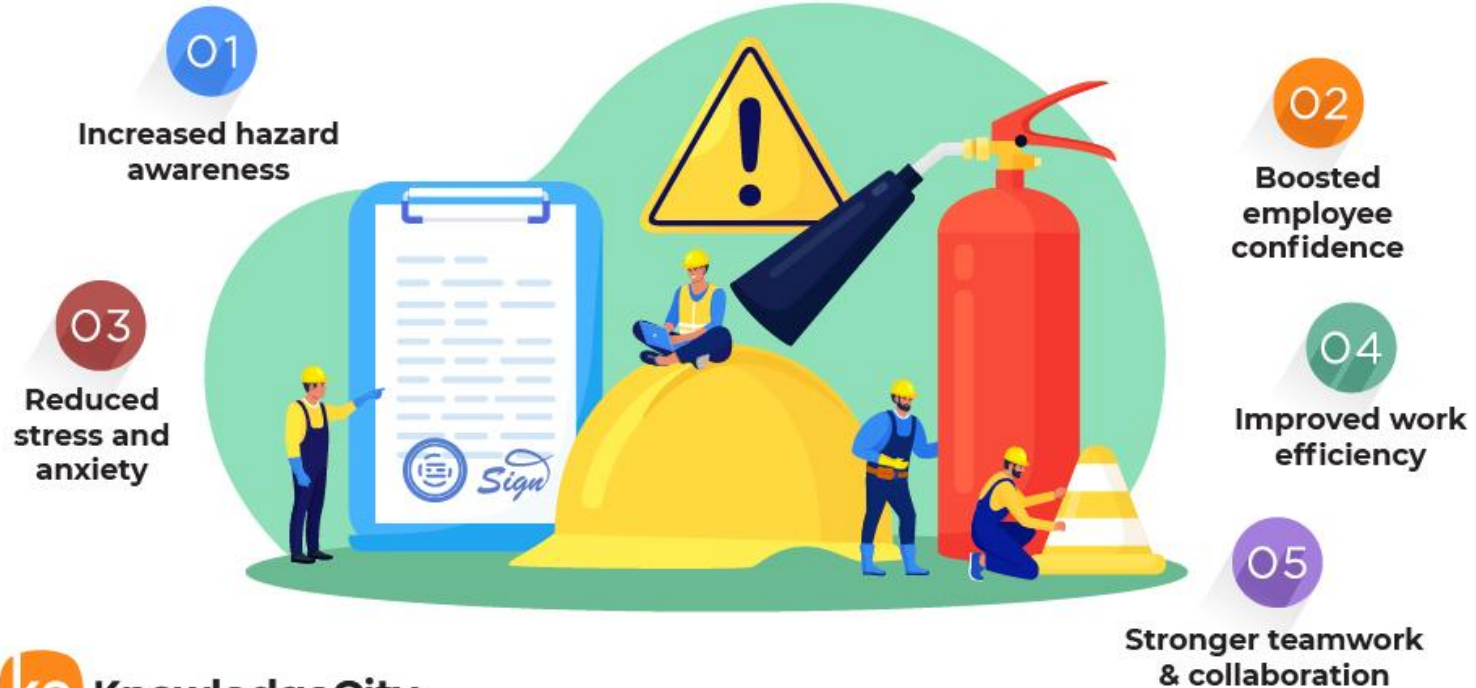
Every individual in the workplace, from management to employees, plays a critical role in maintaining a safe environment. Collective responsibility is key to effective safety practices.



Employees must receive adequate training and have access to necessary safety equipment to perform their jobs safely.



5 Benefits of Safety Training Programs





**Make it loud
and clear!**

Report hazards
when you see them.

Reporting Hazards Without Fear

Workers should feel empowered to report hazards without fear of retaliation or negative consequences.

Consultation About Safety Matters:
Employees should be consulted about safety matters, ensuring their voices are heard in decision-making processes.





Your Responsibilities

Following Safety Procedures: Adhering to established safety procedures is essential for maintaining a safe workplace.

Using Protective Equipment: Employees must utilise appropriate protective equipment to mitigate risks associated with their tasks.

Reporting hazards immediately: Reporting any hazards immediately helps prevent accidents and ensures a safer environment for all.





Your Responsibilities (cont.)

Watching Out for Coworkers: Looking out for the safety of coworkers fosters a supportive and vigilant workplace culture.

Participating in Safety Training: Engagement in regular safety training is crucial for staying informed about best practices and updates.



Key Risk Areas

Physical Hazards

Heavy lifting, Slips and trips, Working at heights, Machinery operation

Environmental Hazards

Noise, Temperature, Lighting, Air quality

Mental Health

Work stress, Bullying, Fatigue, Work-life balance



Emergency Procedures

Evacuation Routes and Emergency Exits

Familiarise yourself with evacuation routes and the locations of emergency exits to ensure safe evacuation during emergencies.

First Aid Kits and First Aid Officers

Know where first aid kits are located and identify your first aid officers for assistance in case of injuries.

Emergency Contact Numbers

Keep a list of emergency contact numbers readily available for quick access during a crisis.



Reporting Incidents

Immediate Action and Reporting to Supervisor

If an unsafe situation arises, stop work immediately and report it to your supervisor.

Documenting the Incident and Participating in Investigations

Thoroughly document the incident and cooperate during investigations to enhance safety measures.

Contributing to Future Incident Prevention

Your input is valuable in developing strategies to prevent future incidents and improve workplace safety.



Understanding ISO 45001



International Standard for Workplace Safety

ISO 45001 is an international standard that outlines best practices for workplace safety.



Focus on Preventing Injuries and Continuous Improvement

The standard emphasises injury prevention and encourages continuous improvement in safety practices.





Involvement of Everyone in Safety Planning

Everyone must be involved in safety planning to ensure comprehensive safety measures.

Regular reviews and updates: Regular reviews and updates of safety protocols are crucial for maintaining effective safety standards.



Our Safety Goals

Achieving Zero Workplace Injuries

Our primary goal is to achieve zero workplace injuries through proactive safety measures.

Ensuring Everyone Goes Home Safe

We are committed to ensuring that every employee goes home safe at the end of each day.





Regular Safety Training and Open Communication

Engaging in regular safety training and maintaining open lines of communication are vital for a safe workplace.

Commitment to Continuous Improvement:
We are dedicated to a culture of continuous improvement in safety practices.





How to Raise Safety Concerns (cont.)

Communicating with Supervisors: Open communication with your supervisor is essential for addressing safety concerns.

Using Incident Report Forms: utilise incident report forms to formally document safety issues.

Contacting Safety Representatives: Reach out to safety representatives for guidance and support regarding safety matters.





How to Raise Safety Concerns

Joining Safety Committees: Participating in safety committees allows employees to contribute to safety discussions and initiatives.

Suggesting Improvements: Your suggestions for safety improvements are welcomed and encouraged to enhance workplace safety.



SAFETY AT THE WORKPLACE



Conclusion and Reminder of Safety Responsibility

Remember, safety is everyone's responsibility. If you are ever unsure about a situation, always ask for guidance. No job is so urgent that it cannot be done safely.

Let's work together to look after
ourselves and our coworkers.





Questions?

Thanks for your time.

Please contact us if you have any questions or you'd like to provide feedback.

Email: apic@apicert.com.au

Web: www.apicert.com.au